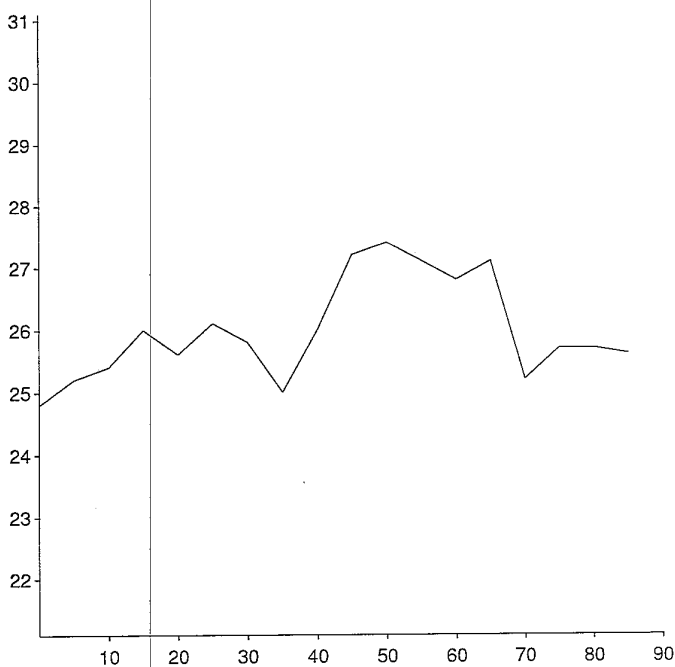
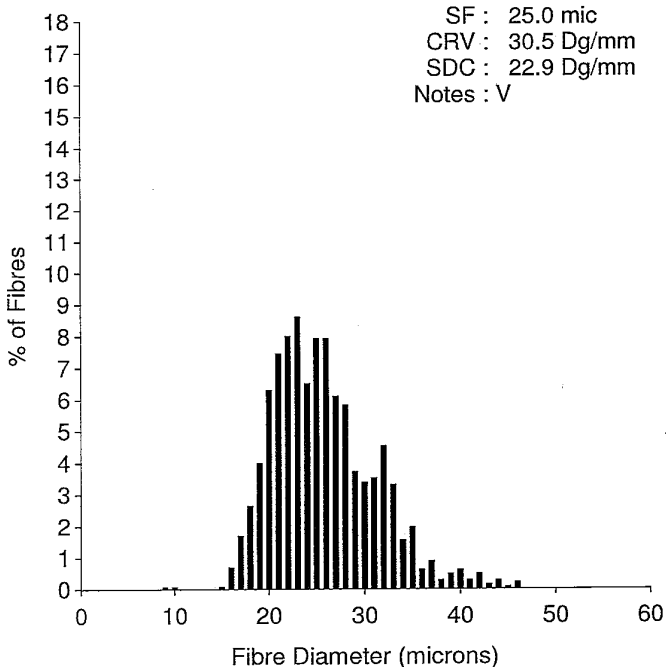


OFDA 2000 REPORT : SORTED BY EID/TAG

Samples 02/05/2019 (Trim High On) (153Records)

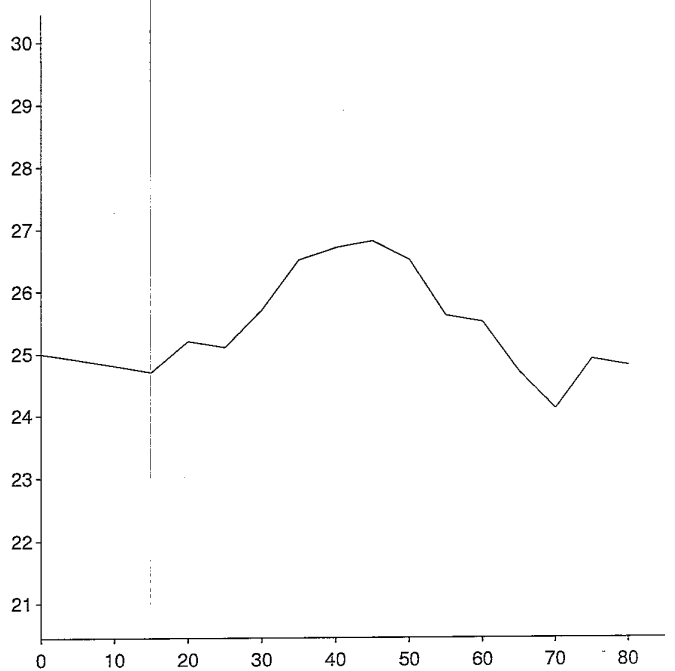
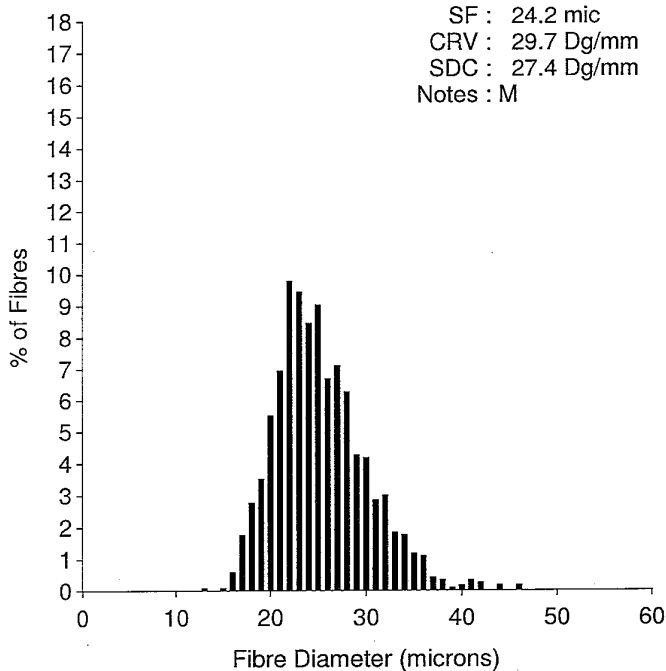
EID : Schoeckbli  
 EarTag : Cosmo  
 Micron : 25.7 mic  
 SD : 5.4 mic  
 CVD : 20.8 %  
 CEM : 9.9 mic  
 <15 : 0.1 %  
 CF : 80.9 %  
 SF : 25.0 mic  
 CRV : 30.5 Dg/mm  
 SDC : 22.9 Dg/mm  
 Notes : V

Staple Len : 90.0 mm  
 Min Mic : 24.8 mic  
 Max Mic : 27.4 mic  
 SD Along : 0.80 mic



EID : Schoeckbli  
 EarTag : Cosmo  
 Micron : 25.3 mic  
 SD : 4.8 mic  
 CVD : 19.0 %  
 CEM : 9.3 mic  
 <15 : 0.1 %  
 CF : 86.4 %  
 SF : 24.2 mic  
 CRV : 29.7 Dg/mm  
 SDC : 27.4 Dg/mm  
 Notes : M

Staple Len : 85.0 mm  
 Min Mic : 24.1 mic  
 Max Mic : 26.8 mic  
 SD Along : 0.80 mic



OFDA 2000 REPORT : SORTED BY EID/TAG

Samples 02/05/2019 (Trim High On) (153Records)

EID : Schoeckbli  
 EarTag : Cosmo  
 Micron : 24.4 mic  
 SD : 4.7 mic  
 CVD : 19.4 %  
 CEM : 9.3 mic  
 <15 : 0.2 %  
 CF : 89.6 %  
 SF : 23.4 mic  
 CRV : 30.8 Dg/mm  
 SDC : 22.5 Dg/mm  
 Notes : H

Staple Len : 90.0 mm  
 Min Mic : 23.5 mic  
 Max Mic : 26.9 mic  
 SD Along : 1.00 mic

